

Storage

Storage Solutions	298
Larder Storage	300
Base Storage	306
Corner Storage	308
Cutlery Trays and Drawer Storage	310
Wall Storage and Shelf Packs	312
Waste and Recycling	314
Fixtures and Fittings	316

PRODUCTS AVAILABLE FROM STOCK

297

Storage Solutions

The right storage can help your customer maximise the use of available space in the kitchen. Our range of storage solutions are designed to be easy to fit, made to last and keep essentials organised and easy to access.

Larder Cabinet Storage

- Increased storage capacity
- Gives more accessibility and organisation to a kitchen
- Adds personalisation
- Available in a range of sizes
- Factory Fitted for alignment options available

Base Cabinet Storage

- Solutions for smaller cabinets for easy access
- Factory Fitted anthracite available in 3 sizes
- Internal drawers, wire baskets and wicker baskets also available

Corner Cabinet Storage

- Maximise Storage
- Full access to everything in the cabinet
- Available in left hand and right hand
- Factory Fitted options available

Wall Cabinet Storage

- Easily accessible storage
- Storage available in shelving, pull-down and pull-out
- Range of sizes available
- Factory Fitted options available

Drawer Storage

- Available in 300mm - 1000mm
- Factory Fitted options available
- Standard drawers available in silver with soft-close adaptor kits
- Upgrade Blum drawers available in anthracite with integrated soft-close runners
- Drawer solutions for plinths, built under oven housing, sinks and shallow depth units

Waste and Recycling

- Solutions for every kitchen
- A range of integrated and pull-out solutions
- Capacities options from 15L to 88L
- Anthracite colour to complement other storage



Factory Fitted Storage Options

- ✓ Exclusive to our rigid cabinets, including larder, corner, base and wall storage solutions
- ✓ Saves on fitting time
- ✓ The 'Factory Fitted' icon denotes products fitted in our UK manufacturing facility
- ✓ Innovative solutions to maximise space
- ✓ Soft-close pull out storage



PRODUCTS AVAILABLE FROM STOCK

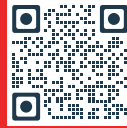
Larder Storage

- ✓ Premium multi-functional larder units
- ✓ Options available in 300mm, 400mm, 500mm, 600mm, 1000mm and Corners
- ✓ Available in H2112mm and H2292mm
- ✓ Pre-built Larder Pantry Top Box for quick installation of 1000mm larders
- ✓ Use our QR code to help with installation

Larder Installation Instructions

Scan the QR code with your smart device to access key larder installation instructions. You can also download the kitchen installation manual on [Howdens.com](https://www.howdens.com)

- ✓ Step-by-step instruction manual
- ✓ Useful hints and tips



2 Drawer Larder Unit With Oak Door Balcony and Natural Oak Internal Cutlery Drawer



• Available in Selected Ranges

Size (W)	Drawers	Internal Cutlery Drawer	Soft-Close	Door Balconies	Code
500mm	2	✓	✓	1	Sold By Range
600mm	2	✓	✓	1	Sold By Range
1000mm	2	✓	✓	2	Sold By Range

Larder Unit With Door Balcony



• Available in Selected Ranges

Size (W)	Soft-Close	Door Balconies	Code
500mm	✓	1	Sold By Range
600mm	✓	1	Sold By Range

Larder Unit With Door Balconies



• Available in Selected Ranges

Size (W)	Soft-Close	Door Balconies	Code
1000mm	✓	2	Sold By Range

Larder With Oak internal Drawers



• Available in Selected Ranges

Size (W)	Number of Drawers	Soft-Close	Door Balconies	Code
600mm	3	✓	1	Sold By Range

Larder Unit With 3 Internal Drawers and Door Balconies



• Available in Selected Ranges

Size (W)	Number of Drawers	Soft-Close	Door Balconies	Code
600mm	3	✓	1	Sold By Range
1000mm	3	✓	2	Sold By Range

Larder Unit With Door Balconies and Internal Drawers



• Available in Selected Ranges

Size (W)	Number of Drawers	Soft-Close	Door Balconies	Code
1000mm	3	✓	2	Sold By Range

PRODUCTS AVAILABLE FROM STOCK

301

Larder Storage Tower With Internal Drawers*



• Single 500mm and 600mm Larder Door Available in Elmbridge, Chilcomb and Hockley

Size (W)	Max. Weight per Basket	Soft-Close Runners	Code
300mm	30kg	✓	Sold By Range
400mm	30kg	✓	Sold By Range
600mm	30kg	✓	Sold By Range
600mm	30kg	✓	Sold By Range

Larder Unit With Anthracite Door Balconies

NEW



• Available in Selected Ranges

Size (W)	Soft-Close	Door Balconies	Code
1000mm	✓	2	Sold By Range

Larder With BLUM Internal Drawers

NEW



• Available in Selected Ranges

Size (W)	Number of Drawers	Soft-Close	Door Balconies	Code
600mm	2	✓	1	Sold By Range

*For use with 155° hinges

Walk-In Larder With L-Shape Units



Scan the QR Code For Video on Installation



Scan the QR Code For Installation Guidelines



• Internal Shelves Included • Ceiling Panel Included • Worktop and Backing Board Not Included • Not Compatible with Decorative Plinth

Type	Size (HxWxD)	Soft-Close	Code
Full Height	2112mm x 1019/1161mm x 1019/1161mm	✓	Sold By Range
Extra Tall	2292mm x 1019/1161mm x 1019/1161mm	✓	Sold By Range

Walk-In Larder - Frame Only



Scan the QR Code For Video on Installation



Scan the QR Code For Installation Guidelines



• Shelves Not Included • Not Compatible with Decorative Plinth

Type	Size (HxWxD)	Soft-Close	Code
Full Height	2112mm x 1019/1161mm x 1019/1161mm	✓	Sold By Range
Extra Tall	2292mm x 1019/1161mm x 1019/1161mm	✓	Sold By Range

Corner Larder Unit



Scan the QR Code For Installation Guidelines



• Not compatible with Decorative Plinth

Size	Full Height - H2112mm x D1161mm x W1161mm
Soft-Close	✓
Code	Sold By Range

Pull-Out Wirework Larder



NEW SIZES AVAILABLE



Jointing Bar - MYH1301

• Create Wirework Larder Unit By Stacking Two Products on Top of Each Other • Jointing Bar Available to Enable Both Top and Bottom Wire Work to Be Pulled Out Together

Size (W)	Code
300mm	Sold By Range
400mm	Sold By Range NEW
500mm	Sold By Range NEW
600mm	Sold By Range NEW

Anthracite Pull-Out Larder



FACTORY FITTED

Size (W)	Max. Weight per Basket	Soft-Close Runners	Solid Base	Number of Baskets	Code
300mm	12kg	✓	✓	5	Sold By Range
400mm	12kg	✓	✓	5	Sold By Range
500mm	12kg	✓	✓	5	Sold By Range

Door Mounted Anthracite Pull-Out Larder*

NEW
FACTORY FITTED



* Single 500mm and 600mm Larder Door Available in Elmbridge, Chilcomb and Hockley

Size (W)	Max. Weight per Basket	Soft-Close Runners	Solid Base	Slip Resistant	Number of Baskets	Code
300mm	18kg	✓	✓	✓	5	Sold By Range
400mm	18kg	✓	✓	✓	5	Sold By Range
500mm	18kg	✓	✓	✓	5	Sold By Range

Individual Additional Baskets

Size (W)	Code
300mm	HYH0585
400mm	HYH0586
500mm	HYH0587

Basket Set (Pack of 5)

Size (W)	Code
300mm	HYH0105
400mm	HYH0106
500mm	HYH0107

Door Mounted Anthracite Swing Forward Larder

NEW
FACTORY FITTED



* Single 500mm and 600mm Larder Door Available in Elmbridge, Chilcomb and Hockley

Size (W)	Max. Weight per Basket	Soft-Close Runners	Solid Base	Anti-Slip Coating	Number of Baskets	Code
500mm	15kg	✓	✓	✓	5	Sold By Range
600mm	15kg	✓	✓	✓	5	Sold By Range

Individual Additional Baskets

Size (W)	Code
500mm	HYH0022
600mm	HYH0023

Basket Set (Pack of 5)

Size (W)	Code
500mm	HYH0020
600mm	HYH0021

*Illustration only. Model and specifications may vary subject to availability



Appliances made for the kitchen, a guarantee made for the home.

Lamona appliances have been expertly designed and manufactured to suit the day-to-day running of all households. Designed to fit seamlessly into kitchens of all shapes and sizes, our Lamona appliances have been independently tested to meet high standards of safety, reliability and durability.

LAMONA

at the heart of the kitchen



Base Storage

- ✓ Builder-Fit wirework options
- ✓ Available in various sizes
- ✓ Factory Fit solid side storage options
- ✓ Internal and Decorative Drawer Base options available



Pull-Out Wire Base Accessory



NEW SIZES AVAILABLE

• Includes Two Wire Baskets

Size (W)	Max. Weight per Basket	Number of Baskets	Code
300mm	6kg	2	HYH1334
400mm	6kg	2	HYH1342 NEW
500mm	6kg	2	HYH1343 NEW
600mm	6kg	2	HYH1344 NEW

Chrome Deep Vegetable Baskets



Size (W)	Max. Weight per Basket	Number of Drawers	Code
500mm	26kg	1	SJN6102
600mm	25kg	1	SJN6112

*Illustration only. Model and specifications may vary subject to availability | *1 Natural wood products may vary slightly in tone

Door Mounted Anthracite Pull-Out Base Unit



Size (W)	Max. Weight per Basket Runners	Soft-Close	Slip Resistant of Baskets	Number	Code
150mm	6kg	✓	✓	2	Sold By Range
200mm	12kg	✓	✓	2	Sold By Range
300mm	12kg	✓	✓	2	Sold By Range

Internal 3 Drawer Base Unit



Size (W)	Max. Weight per Basket	Soft-Close Runners	Number of Drawers	Code
600mm	30kg	✓	3	Sold By Range

Deep Internal Storage Drawer*



* Maximum of Two Drawers per Hi-Line Base Unit

Size (W)	Max. Weight per Drawer	Soft-Close Runners	Code
300mm	30kg	✓	HYH0960*
400mm	30kg	✓	HYH3401*
500mm	30kg	✓	HYH0962*
600mm	30kg	✓	HYH0986*

Oak Internal Drawers in Unit*1



Size (W)	Fillers Included	Number of Drawers	Code
600mm	Natural Oak Fillers	3	Sold By Range
1000mm	Natural Oak Fillers	3	Sold By Range
600mm	White Oak Fillers	3	Sold By Range
1000mm	White Oak Fillers	3	Sold By Range

PRODUCTS AVAILABLE FROM STOCK

Corner Storage

- ✓ Factory Fit corner options
- ✓ Available in tray or carousel
- ✓ Available in 800mm, 1000mm and L Shaped Corner solutions
- ✓ Left and Right Hand options
- ✓ Wire and solid side baskets available



Single Standard Extension Corner Storage Accessory



• Independently Operating Shelves • Solid Base

Corner Orientation	Size (W)	Max. Weight per Door Shelf	Number of Shelves	Code
Left-Hand	800mm	18kg	1	ACK1206
Right-Hand	800mm	18kg	1	ACK1207
Left-Hand	1000mm	18kg	1	ACK1208
Right-Hand	1000mm	18kg	1	ACK1209

Standard Extension Corner Storage Accessory



• Independently Operating Shelves • Solid Base
• Available Pre-Fitted in White Cabinets Only

Corner Orientation	Size (W)	Max. Weight per Door Shelf	Number of Shelves	Code
Left-Hand	800mm	18kg	2	Sold By Range
Right-Hand	800mm	18kg	2	Sold By Range
Left-Hand	1000mm	18kg	2	Sold By Range
Right-Hand	1000mm	18kg	2	Sold By Range

*Illustration only. Model and specifications may vary subject to availability

Full Extension Corner Storage Accessory



• Independently Operating Shelves • Solid Base • Anti-Slip Coating

Corner Orientation	Size (W)	Max. Weight per Door Shelf	Number of Shelves	Code
Left-Hand	800mm	25kg	2	Sold By Range
Right-Hand	800mm	25kg	2	Sold By Range
Left-Hand	1000mm	25kg	2	Sold By Range
Right-Hand	1000mm	25kg	2	Sold By Range

Corner Storage Accessory*



• Solid Base • Anti-Slip Coating

Corner Orientation	Size (W)	Max. Weight per Door Shelf	Number of Shelves	Code
Left-Hand	1000mm	7kg - 9kg	4	Sold By Range
Right-Hand	1000mm	7kg - 9kg	4	Sold By Range

Standard Corner Carousel



• For Use in 931 Corner Base Unit • Independently Operating Shelves
• Solid Base • Shelf Heights Can Be Adjusted

Max. Weight per Door Shelf	Number of Shelves	Code
16kg	2	HYH0410

Premium Corner Carousel



• For Use in 931 Corner Base Unit • Independently Operating Shelves
• Solid Base • Shelf Heights Can Be Adjusted • Soft-Close Runners

Max. Weight per Door Shelf	Number of Shelves	Code
20kg	2	HYH0411

PRODUCTS AVAILABLE FROM STOCK

Drawer Storage

- ✓ Lifetime Guarantee on Blum Drawers
- ✓ 20 Year Guarantee on FGV Drawers
- ✓ Available in Standard and Pan Height, sold by range
- ✓ 5 Year Guarantee on Cutlery Trays
- ✓ 6 styles of Cutlery Trays available including, silver, anthracite, Oak and Hemp
- ✓ Additional accessories available with Contemporary Trays



• Sold by Range • Compatible with Silver Cutlery Tray • 20 Year Guarantee

Size (W)	Standard Height	Pan Height	Max Weight Capacity
300mm	✓	✓	25kg
400mm	✓	✓	25kg
500mm	✓	✓	25kg
600mm	✓	✓	25kg
700mm	✓	✓	25kg
800mm	✓	✓	25kg
900mm	✓	✓	25kg
1000mm	✓	✓	25kg



• Sold by Range • Compatible with Anthracite and Oak Cutlery Trays • 25 Year Guarantee

Size (W)	Standard Height	Pan Height	Max Weight Capacity
300mm	✓	✓	30kg
350mm	✓	✓	30kg
400mm	✓	✓	30kg
450mm	✓	✓	30kg
500mm	✓	✓	30kg
600mm	✓	✓	30kg
700mm	✓	✓	50kg
800mm	✓	✓	50kg
900mm	✓	✓	50kg
1000mm	Sold by range	✓	50kg



• Works with Anthracite and Oak Cutlery Trays • 25 Year Guarantee

Size (W)	Code
300mm	HYH0980 UK F
400mm	HYH0981 UK F
500mm	HYH0984 UK F
600mm	HYH0988 UK F
700mm	HYH0807 UK F
800mm	HYH0808 UK F
900mm	HYH0809 UK F
1000mm	HYH0810 UK F

Solid Oak Internal Cutlery Drawer*



• 5 Year Manufacturer's Guarantee

Size (W)	Code
500mm	HYH8225 UK F
600mm	HYH8226 UK F
700mm	HYH8227 UK F
800mm	HYH8228 UK F
900mm	HYH8229 UK F
1000mm	HYH8230 UK F

Moulded Silver Tray



• 5 Year Manufacturer's Guarantee
• Compatible with FGV Standard Drawers

Size (W)	Code
300mm	HYH8176
400mm	HYH8177
500mm	HYH8178
600mm	HYH8179
800mm	HYH8104
900mm	HYH8102
1000mm	HYH8103

Moulded Anthracite Tray

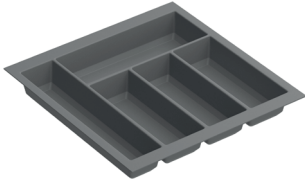


• 5 Year Manufacturer's Guarantee
• Compatible With Blum Drawers

Size (W)	Code
300mm	HYH0912
400mm	HYH0913
500mm	HYH0923
600mm	HYH0933
700mm	HYH0934 NEW
800mm	HYH0992
900mm	HYH0989
1000mm	HYH0997

*Natural wood products may vary slightly in tone | **UK** - Manufactured in the UK | **F** = FSC®

Soft Touch Anthracite Cutlery Tray



• 5 Year Manufacturer's Guarantee

Size (W)	Code
300mm	HYH0943
400mm	HYH0944
500mm	HYH0945
600mm	HYH0946
700mm	HYH0947
800mm	HYH0948
900mm	HYH0949
1000mm	HYH0950



Classic Oak Tray*



• 5 Year Manufacturer's Guarantee
• Compatible With Blum Drawers

Size (W)	Code
300mm	HYH8503 F
400mm	HYH8504 F
500mm	HYH8505 F
600mm	HYH8506 F
700mm	HYH8507 F
800mm	HYH8508 F
900mm	HYH8509 F
1000mm	HYH8510 F

Contemporary Oak Tray*



1000mm Shown in Image

• Works With Contemporary Oak Accessories Including Knife Block, Spice Stair and Foil Cutter
• 500mm and 600mm Fit One Accessory, 700mm and 800mm Fit Two Accessories 900mm Fits Three Accessories, 1000mm Fits Four Accessories • 5 Year Guarantee • Compatible with Blum Drawers

Size (W)	Code
400mm	HYH8304 F
500mm	HYH8305 F
600mm	HYH8306 F
700mm	HYH8307 F
800mm	HYH8308 F
900mm	HYH8309 F
1000mm	HYH8310 F



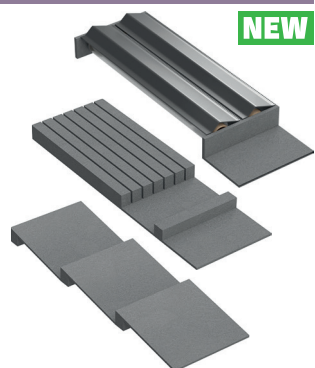
Type	Size	Code
Foil Cutter Insert	W137mm x D422mm	HYH8312 F
Knife Block Insert	W137mm x D137mm	HYH8311 F
Spice Rack Insert	W137mm x D422mm	HYH8313 F

Contemporary Organiq Cutlery Tray



• 5 Year Manufacturer's Guarantee

Size (W)	Code
400mm	HYH8314
500mm	HYH8315
600mm	HYH8316
700mm	HYH8317
800mm	HYH8318
900mm	HYH8319
1000mm	HYH8320



Type	Size	Code
Foil Cutter Insert	W137mm x D422mm	HYH8322
Knife Block Insert	W137mm x D422mm	HYH8321
Spice Rack Insert	W137mm x D422mm	HYH8323

Build-Under Oven Housing Plinth Drawer*

- Available With Standard Build Under Oven Housing
- Not Suitable For Use With Decorative Plinths
- Soft Close Runners
- 5 Year Guarantee

Size (W)	Drawer capacity	Code
600mm	30 litres	Sold By Range



Built-Under Oven Housing Blum Drawer*

- Available with Standard Build Under Oven Housing
- Not for use with Decorative Plinths
- Soft Close Runners
- 25 Year Guarantee

Size (W)	Drawer capacity	Code
600mm	23 litres	Sold By Range



Under Sink Storage Drawer



- Soft-Close Runners

Size (W)	Code
800mm	Sold By Range
W000mm	Sold by range

Pan Drawer Divider



- Can Easily Be Adapted to the Size of the Contents and Positioned Anywhere in the Drawer
- This Image Shows Two Pan Drawer Divider Packs Being Used

Colour	Code
Anthracite	ACK1837

Plinth Drawer



- Soft-Close Runners
- Not Suitable For Use With Decorative Plinth

Size (W)	Code
300mm (for 600mm cabinet)	ACK1650
400mm (for 600mm cabinet)	ACK1660
600mm (for 800mm cabinet)	ACK1680
600mm (for 1000mm cabinet)	ACK1690
1000mm (2 x 400mm wide)	ACK1692

Full Height Pull-Down Shelf Wall Unit



- Gives Easy Access • Minimal Cabinet Size Is 600mm • Pull Resistance Can Be Altered By A Switch At Back

Size (W)	Cabinet Colour	Max. Weight Per Basket	Code
600mm	Craft Grey	4kg	HCB4557
600mm	Natural Oak	4kg	RKC1557
600mm	White	4kg	RKC8557

Full Height Pull Out Wall Unit



Size (W)	Max. Weight per Basket	Soft-Close Runners	Solid Base	Number of Baskets	Code
160mm	6kg	✓	✓	2	Sold By Range

Wooden Plate Rack



- Maximum Number of Plates: 16 •
- 5 Year Manufacturer's Guarantee

Size (HxWxD)	Colour	Code
324mm x 763mm x 48mm	Natural Oak	HYH8146 F

Primed Wooden Corbel Shelving Bracket



- 2 Year Manufacturer's Guarantee

Size (H)	Colour	Quantity	Code
140mm	White	Sold as Singles	MOD0059 UK F

*Not suitable for food storage! * 1 Natural wood products may vary slightly in tone | UK = Manufactured in the UK | F = FSC®

Black Steel Shelving Bracket



- Storage Maximum Weight: 60Kg
- Maximum Load Capacity: 60kg

Size (HxL)	Colour	Quantity	Code
668mm x 200mm	Black	Sold as Singles	HKC0069

Oak Door Balcony*1



- 5 Year Manufacturer's Guarantee
- Storage Maximum Weight: 10Kg
- 5 Year Manufacturer's Guarantee

Size (HxWxD)	Cabinet Colour	Code
1100mm x 400mm x 92mm	Natural Oak	HYH8147 F

Anthracite Door Balcony



- Storage Maximum Weight: 10Kg

Size (HxWxD)	Cabinet Colour	Code
1140mm x 360mm x 95mm	Anthracite	HYH8148
1140mm x 460mm x 95mm	Anthracite	HYH8149

Internal Glass Shelves



- Storage Maximum Weight: 6Kg per Shelf

Size (WxD)	Quantity	Code
400mm x 250mm	Sold as Singles	HYH5944 UK F
400mm x 338mm	Sold as Singles	HYH5945 UK F
500mm x 250mm	Pack of 2	HYH5940 UK F
500mm x 250mm	Pack of 3	HYH5941 UK F
500mm x 338mm	Sold as Singles	HYH5943 UK F
600mm x 250mm	Sold as Singles	HYH5942 UK F
600mm x 338mm	Sold as Singles	HYH5946 UK F

Cabinet Shelf Packs

Base and Tower Shelves

Type	Size (WxD)	Colour	Quantity	Code
Base and Tower Shelf	300mm x 434mm	White	Sold as Singles	RKC8803 UK F
Base and Tower Shelf	300mm x 434mm	Natural Oak	Sold as Singles	RKC1803 UK F
Base and Tower Shelf	300mm x 434mm	Croft Grey	Sold as Singles	HCB4803 UK F
Base and Tower Shelf	400mm x 434mm	White	Sold as Singles	RKC8804 UK F
Base and Tower Shelf	400mm x 434mm	Natural Oak	Sold as Singles	RKC1804 UK F
Base and Tower Shelf	400mm x 434mm	Croft Grey	Sold as Singles	HCB4804 UK F
Base and Tower Shelf	500mm x 434mm	White	Sold as Singles	RKC8805 UK F
Base and Tower Shelf	500mm x 434mm	Natural Oak	Sold as Singles	RKC1805 UK F
Base and Tower Shelf	500mm x 434mm	Croft Grey	Sold as Singles	HCB4805 UK F
Base and Tower Shelf	600mm x 434mm	White	Sold as Singles	RKC8806 UK F
Base and Tower Shelf	600mm x 434mm	Natural Oak	Sold as Singles	RKC1806 UK F
Base and Tower Shelf	600mm x 434mm	Croft Grey	Sold as Singles	HCB4806 UK F
Base Shelf	800mm x 434mm	White	Sold as Singles	RKC8832 UK F
Base Shelf	800mm x 434mm	Natural Oak	Sold as Singles	RKM1832 UK F
Base Shelf	800mm x 434mm	Croft Grey	Sold as Singles	HCB4832 UK F
Base Shelf	1000mm x 434mm	White	Sold as Singles	RKC8841 UK F
Base Shelf	1000mm x 434mm	Natural Oak	Sold as Singles	RKM1841 UK F
Base Shelf	1000mm x 434mm	Croft Grey	Sold as Singles	HCB4841 UK F
Larder Top Shelf Pack	1000mm x 398mm	Croft Grey	Sold as Singles	HCB4828 UK F
Larder Top Shelf Pack	1000mm x 398mm	Natural Oak	Sold as Singles	RKC1828 UK F
Larder Top Shelf Pack	1000mm x 398mm	White	Sold as Singles	RKC8828 UK F

931 Corner Base Unit Shelf Pack



Colour	Code
Croft Grey	HCB4386 UK F
Natural Oak	RKM1386 UK F
White	RKC8386 UK F

Wall Shelves

Size (WxD)	Colour	Quantity	Code
600mm x 250mm	White	Sold as Singles	RKC8812 UK F
600mm x 250mm	Natural Oak	Sold as Singles	RKC1812 UK F
600mm x 250mm	Croft Grey	Sold as Singles	HCB4812 UK F
500mm x 250mm	White	Sold as Singles	RKC8809 UK F
500mm x 250mm	Natural Oak	Sold as Singles	RKC1809 UK F
500mm x 250mm	Croft Grey	Sold as Singles	HCB4809 UK F
300mm x 250mm	White	Sold as Singles	RKC8807 UK F
300mm x 250mm	Natural Oak	Sold as Singles	RKC1807 UK F
300mm x 250mm	Croft Grey	Sold as Singles	HCB4807 UK F
400mm x 250mm	White	Sold as Singles	RKC8808 UK F
400mm x 250mm	Natural Oak	Sold as Singles	RKC1808 UK F
400mm x 250mm	Croft Grey	Sold as Singles	HCB4808 UK F
1000mm x 250mm	White	Sold as Singles	RKC8831 UK F
1000mm x 250mm	Natural Oak	Sold as Singles	RKM1831 UK F
1000mm x 250mm	Croft Grey	Sold as Singles	HCB4831 UK F

Waste and Recycling

Three types of bins available:

- ✓ Integrated Bins
- ✓ Pull-Out Bins
- ✓ Bin Compartments for drawers

To help with recycling and food waste management.

- ✓ Available in 300mm - 1000mm
- ✓ Available in 15L to 88L capacities
- ✓ Integrated bins available with internal drawers



88L Integrated Recycling Bin



- Bin Style: Door Mounted • Bin Style: Pull-Out and Door Mounted
- Soft-Close Runners

Cabinet Width	Type	Capacity	Code
600mm	With no storage	88L (2 x 44L)	HYH0673
600mm	With Internal Drawer	88L (2 x 44L)	Sold by range

Bin Drawer Compartments



- Bin Style: Mounted • Use With Blum Drawers

Cabinet Width	Type	Capacity	Code
1000mm	Recycling / Waste	60L (3 x 16L, 1 x 12L)	HYH0696
800mm	Recycling / Waste	48L (3 x 16L)	HYH0695

85L Integrated Recycling Bin



- Bin Style: Door Mounted • Soft-Close Runners

Cabinet Width	Type	Capacity	Code
600mm	With no storage	85L (2 x 32L, 1 x 21L)	HYH0667
600mm	With Internal Drawer	85L (2 x 32L, 1 x 21L)	Sold by range

64L Integrated Recycling Bin



- Bin Style: Door Mounted • Soft-Close Runners

Cabinet Width	Type	Capacity	Code
450mm*	With no storage	64L (2 x 32L)	HYH0691
500mm	With no storage	64L (2 x 32L)	HYH0672
500mm	With Internal Drawer	64L (2 x 32L)	Sold by range

64L Integrated Recycling Bin



- Bin Style: Door Mounted • Soft-Close Runners
- Extra Deep Bin to Use Full Space of Cupboard

Cabinet Width	Type	Capacity	Code
400mm	With No Storage	64L (2 x 32L)	HYH0693

46L Integrated Recycling Bin



- Bin Style: Door Mounted • Soft-Close Runners

Cabinet Width	Type	Capacity	Code
400mm	With no storage	46L (2 x 23L)	HYH0692
400mm	With Internal Drawer	46L (2 x 23L)	Sold by range

32L Integrated Recycling Bin



- Bin Style: Door Mounted • Bin Style: Pull-Out and Door Mounted • Soft-Close Runners

Cabinet Width	Type	Capacity	Code
300mm	With no storage	32L (1 x 32L with 1.2L Shelf)	HYH0668
300mm	With Internal Drawer	32L (1 x 32L with 1.2L Shelf)	Sold by range

58L Pull Out Recycling Bin



- Bin Style: Pull-Out

Minimum Cabinet Size	Capacity	Code
400mm	58L (2 x 29L)	HYH0677

40L Pull Out Recycling Bin



- Bin Style: Pull-Out

Minimum Cabinet Size	Capacity	Code
300mm	40L (1 x 40L)	HYH0680

30L Pull Out Recycling Bin



- Bin Style: Pull-Out

Minimum Cabinet Size	Capacity	Code
300mm	30L (3 x 10L)	HYH0676

30L Pull Out Recycling Bin



- Bin Style: Pull-Out

Minimum Cabinet Size	Capacity	Code
300mm	30L (2 x 15L)	HYH0675

30L Pull Out Recycling Bin



- Bin Style: Pull-Out

Minimum Cabinet Size	Capacity	Code
300mm	30L (1 x 30L)	HYH0674

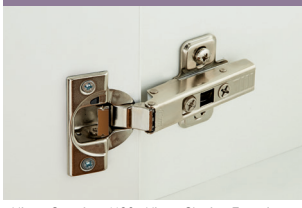
15L Pull Out Recycling Bin



- Bin Style: Mounted

Min. Cabinet Size	Capacity	Code
450mm	15L (1 x 15L)	HYH5502

Soft-Close Hinge



• Hinge Opening: 110° • Hinge Closing Function: Soft Close • Suitable Door Thickness: 14-22mm
• Mount Type: Full Overlay

Opening Angle	Quantity	Code
110°	Pack of 2	HKC0055
110°	Pack of 5	HKC0005
110°	Pack of 10	GIR5111

Soft-Close Hinge For Standard Kitchens



• Hinge Opening: 170°
• Hinge Closing Function: Soft Close

Opening Angle	Quantity	Code
170° Soft Close	Pack of 2	HKC0047

Soft-Close Curved Door Hinge Pack



• Hinge Opening: 110° • Hinge Closing Function: Soft Close • Suitable Door Thickness: 14-22mm
• Mount Type: Full Overlay

Opening Angle	Quantity	Code
110° Soft Close	Pack of 2	RKC0520

Flat Pack Hinge Soft Close Adaptor



• Hinge Closing Function: Soft Close • Suitable Door Thickness: 14-22mm

Opening Angle	Quantity	Code
110° Soft Close	Sold as Singles	HYH8427
170° Soft Close	Sold as Singles	HYH8428

Blum Standard Clip-On Hinge Pack



• Suitable Door Thickness: 14-22mm
• Mount Type: Full Overlay • Includes Expando Screws

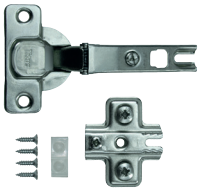
Opening Angle	Quantity	Code
110°	Pack of 2	RKC0480
110°	Pack of 5	RKC0481
170°	Pack of 2	RKC0490

Integrated Handle Hinge Pack



Opening Angle	Quantity	Code
155° Soft Close	Pack of 2	HKC0029

Standard Hinge For Flat-Pack Units



Hinge Opening: 110° • Hinge Closing Function: Standard Close • Suitable Door Thickness: 14-22mm • Mount Type: Full Overlay Euro Screw Which Screws straight Into Chipboard • Euro Screw Which Screws straight Into Chipboard

Opening Angle	Quantity	Code
110° Standard	Pack of 2	HKC0058

Standard Drawer Box Soft-Close Adaptor Kit



Size	Code
Up to 1000mm Drawer Boxes	HYH8433

Soft-Close Door Attachment



• Hinge Closing Function: Soft Close • Suitable Door Thickness: 14-22mm

Quantity	Code
Pack of 10	HYH8420

Magnetic Push-to-Open Mechanism



Code
HYH8438

Bi-Fold Hinge Mechanism*



Size	Code
W500mm/W600mm (Adaptable)	Sold By Range

Lift-Up Hinge Mechanism*



• Hinge Closing Function: Soft Close • Suitable Door Thickness: 14-22mm • Mount Type: Surface Mounted

Cabinet Width	Code
Suitable for 600mm Hob Wall Units and 500mm, 600mm and 800mm Half-Height Wall Units	ACK1135

*Only available in selected sizes and colours | *1 Not compatible with Clerkenwell | *2 Not compatible with standard drawers, flat-pack drawer boxes or shallow depth drawer packs | UK = Manufactured in the UK

Flap-Stay Mechanism*



- Suitable Door Thickness: 14-22mm
- Mount Type: Surface Mounted

Quantity	Code
Pack of 2	HKE0069

Mock Hinge



- Hinge Closing Function: Unsprung
- Suitable Door Thickness: 14-22mm
- Mount Type: Surface Mounted • Only Compatible With In-Frame Kitchens



Colour	Quantity	Code
Aged Brass	Pack of 2	HKC0003
Chrome	Pack of 2	HKC0004

Flap-Stay Hinge*1



- Hinge Opening: 105° • Hinge Closing Function: Soft Close • Suitable Door Thickness: 14-22mm
- Mount Type: Surface Mounted

Size	Code
W500mm, W600mm, W800mm, W1000mm	HKE0054
W800mm	HKE0055

Joining Bar For 300mm Wire Larder



Size	Code
Joining Bar	HYH1301

Over 90%
of the material used to make our cabinet is recyclable

Cabinet Lock



- Supplied With: 2 Keys and Fixings

Finish	Size	Code
Chrome	L40mm x W18mm	GIR0309

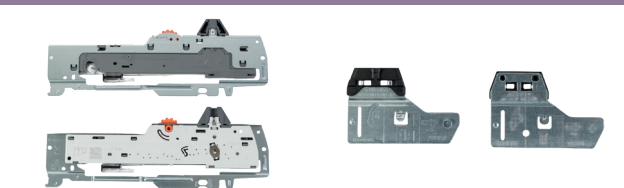
Bi-Fold Track System



- Track System To Be Used On Wall Units and Bespoke Dresser Units

Top Track Size	Mounting Hardware	Code
1500mm	-	ACK1450
600mm	-	ACK1451
-	Left Hand	ACK1452
-	Right Hand	ACK1453

Push-to-Open Drawer Kits For Upgrade Drawers*2



For Drawer	Code
300mm Drawer Box	HYH4405 UK
300mm, 350mm, 400mm, 450mm, 500mm, 600mm Pan Drawer Box 400mm, 500mm, 600mm Drawer Box	HYH4406 UK
700mm, 800mm, 900mm, 1000mm Pan Drawer Box 900mm, 1000mm Drawer Box 800mm Sink Drawer Box	HYH4407 UK
Push-to-Open Synchronisation Rod	HYH4408
Push-to-Open Drawer Adjustment Tool	HYH4400

Brushed Aluminium Towel Rail



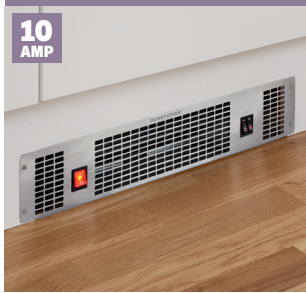
Size (HxW)	Code
89mm x 34mm	HYH1190

Stainless Steel Decorative Legs



Quantity	Code
Pack of 2	HYH5981

Stainless Steel Plinth Heater



Size	Code
H98mm x W500mm x D225mm	HJA1400

Plinth Vent



Size (LxHxD)	Code
367mm x 79mm x 21mm	GIR0960

Plinth Vent



- Complements Kitchen Finishes Such as Porcelain, Ivory, White and Antique White

Size (LxHxD)	Code
376mm x 65mm x 20mm	GIR0965

Plinth Vent



- Complements Kitchen Finishes Such as Pebble, Sage Green, Sandstone, Dark Grey, Light Grey Oak and Concrete

Size (LxHxD)	Code
376mm x 65mm x 20mm	GIR0966

Mid Grey Plinth Vent



Complements Kitchen Finishes Such as Dusk Blue, Natural Oak, Slate Grey and Reed Green

Size (LxHxD)	Code
376mm x 65mm x 20mm	GIR0967

Black Plinth Vent



- Complements Kitchen Finishes Such as Garnet Red, Charcoal, Fir Green, Navy, Walnut, Marine Blue and Dark Stone

Size (LxHxD)	Code
376mm x 65mm x 20mm	GIR0968

Decorative Plinth Vent



- To Be Used With Elbridge, Chilcomb, Holesworth and Bridgemere Decorative Plinths

Size (LxHxD)	Code
458mm x 65mm x 22mm	GIR0957
458mm x 65mm x 22mm	GIR0958
458mm x 65mm x 22mm	GIR0959
458mm x 65mm x 22mm	GIR0962

Wine Cooler Plinth Vent



Size (LxHxD)	Code
255mm x 115mm x 20mm	GIR0963
505mm x 107mm x 20mm	GIR0964

Plinth Corner Protector



Colour	Code
White	GIR0920
Natural Oak	GIR0941 UK
Croft Grey	GIR4944

Wall Hanging Bracket



- Designed to Hold Wall Cabinets Firmly in Place. Suitable for Use With Both Kitchens and Bathroom Cabinets

Code
RKC0135

UK = Manufactured in the UK